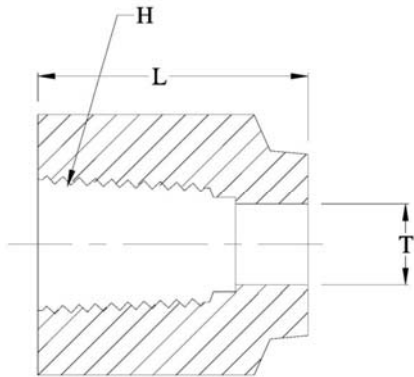


## Nut



Tube O.D. T in	H in	L
1/16	5/16	7.93
1/8	7/16	11.93
3/16	1/2	11.93
1/4	9/16	12.70
5/16	5/8	13.46
3/8	11/16	14.22
1/2	7/8	17.52
5/8	1	17.52
3/4	1-1/8	17.52
7/8	1-1/4	17.52
1	1-1/2	20.57

## Temperature Sensor Technology