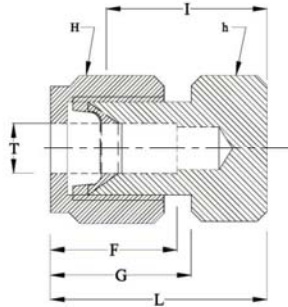


## TUBE CAP



Tube O.D. T in	h in	H in	F	G	I	L
1/16	5/16	5/16	8.63	10.92	11.20	14.18
1/8	7/16	7/16	15.24	15.24	13.46	20.06
3/16	7/16	1/2	13.71	16.00	14.73	21.33
1/4	1/2	9/16	15.24	17.78	16.00	23.36
5/16	9/16	5/8	16.25	18.54	17.01	24.38
3/8	5/8	11/16	16.76	19.30	18.28	25.65
1/2	13/16	7/8	22.86	21.84	19.05	29.21
5/8	15/16	1	24.38	21.84	19.81	29.97
3/4	1-1/16	1-1/8	24.38	21.84	21.33	31.49
7/8	1-3/16	1-1/4	25.90	21.84	23.87	34.03
1	1-3/8	1-1/2	31.24	26.41	26.16	38.35

### Temperature Sensor Technology